

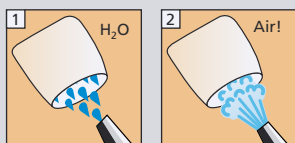
Multilink® Automix

Placement of zirconia, metal, metal-ceramic and indirect composite restorations (Inlays, onlays, crowns, bridges, posts)

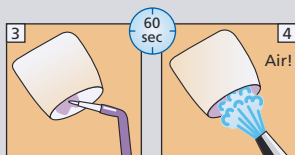
Restoration

Pre-treatment of metal, metal-ceramic and zirconia restorations:
According to manufacturer's instructions.
E.g. IPS e.max ZirCAD: Blast with Al₂O₃ 100 µm, 1 bar

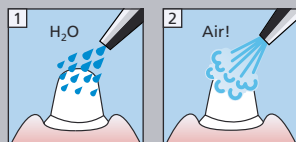
Pre-treatment of composite restorations:
According to manufacturer's instructions.
E.g. SR Nexco: Blast with Al₂O₃ 100 µm, 1 bar



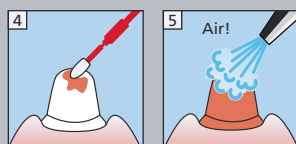
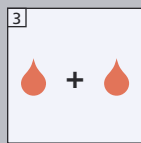
Monobond Plus



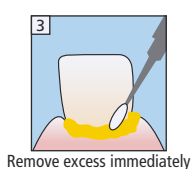
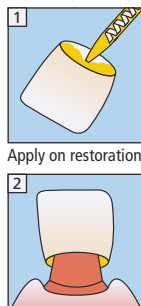
Dentin/Enamel



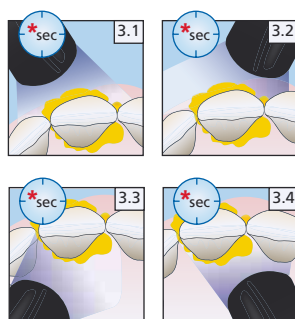
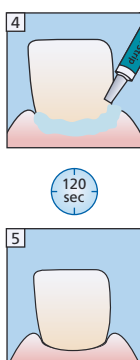
Mix Multilink Primer A+B 1:1



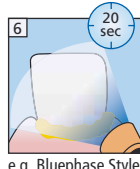
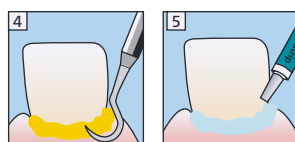
Multilink Automix



Liquid Strip



* Light intensity	Exposure time per quarter segment	
Indicated for cases with up to 2 bridge abutments = 3 to 4-unit bridges		
approx. 650 mW/cm ²	3 sec	e.g. Bluephase in LOW POWER mode
approx. 1.000 mW/cm ²	1-2 sec	e.g. Bluephase Style or Bluephase in HIGH POWER mode
Indicated for cases with up to 6 bridge abutments = circular bridges		
approx. 650 mW/cm ²	1 sec	e.g. Bluephase in LOW POWER mode



e.g. Bluephase Style



Liquid Strip



Multilink® Automix

Befestigung von Zirkoniumoxid-, Metall-, Metallkeramik- und indirekten Compositorestorationen (Inlays, Onlays, Kronen, Brücken, Wurzelstifte)

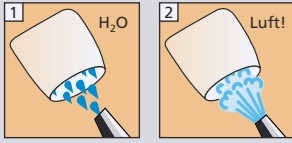
Restauration

Vorbehandlung von Metall-, Metallkeramik- und Zirkoniumoxidkeramik-Restaurationen:
Gemäss Herstellerangaben.

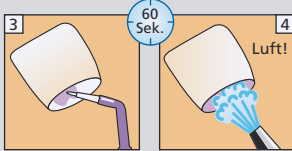
z.B. IPS e.max ZirCAD: mit 100 µm AL₂O₃ bei 1 bar abstrahlen

Vorbehandlung von Compositorestorationen:
Gemäss Herstellerangaben

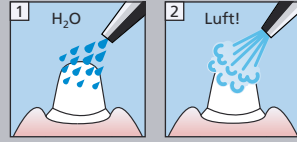
z.B. SR Nexco: mit 100 µm AL₂O₃ bei 1 bar abstrahlen



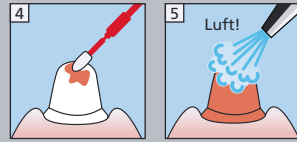
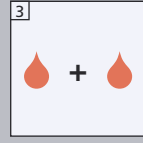
Monobond Plus



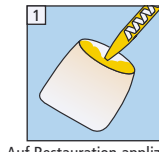
Dentin/Schmelz



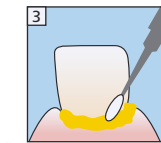
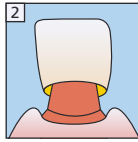
Multilink Primer A+B
1:1 mischen



Multilink Automix

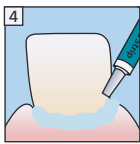


Auf Restauration applizieren

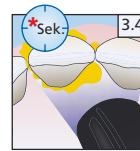
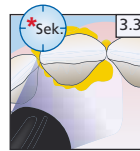
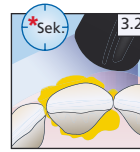
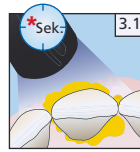
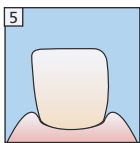


Überschuss sofort entfernen

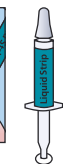
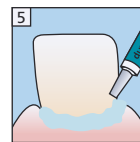
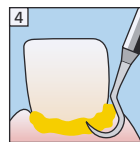
Liquid Strip



120 Sek.



* Lichtintensität	Belichtungszeit pro Viertelseite	
Indikation bis 2 Brückenpfeiler = 3-4 gliedrige Brücke		
ca. 650 mW/cm ²	3 Sek.	z.B. Bluephase im LOW POWER-Modus
ca. 1.000 mW/cm ²	1-2 Sek.	z.B. Bluephase Style oder Bluephase im HIGH POWER-Modus
Indikation bis 6 Brückenpfeiler = zirkuläre Brücke		
ca. 650 mW/cm ²	1 Sek.	z.B. Bluephase im LOW POWER-Modus



Liquid Strip



z.B. Bluephase Style



mehr Informationen unter
www.cementation-navigation.com

CE 0123

ivoclar
vivadenti
clinical